



**CONNAH'S QUAY
HIGH SCHOOL**
Creu Llwyddiant | Creating Success

Connah's Quay High School

Prospectus

24
25



Contents

- 03 Head Learner Welcome
- 04 Headteacher Welcome
- 05 Chair of Governors Welcome
- 06 Enriching Experiences
- 08 Outstanding Teaching and Learning is our Mission
- 10 Reaching Out to Our Community and Aiming High
- 12 Building Future Leaders
- 13 Admissions
- 14 Pastoral Care
- 15 Additional Needs
- 16 Welsh & Proud!
- 18 Curriculum
- 20 Sporting Aims and Provision
- 22 Religious Education and Collective Worship
- 23 Relationships and Sexuality Education (RSE)
- 24 Careers Education
- 25 The School Day / Term Dates
- 26 School Meals
- 27 School Uniform
- 28 School Uniform – Physical Education
- 30 Safeguarding
- 31 Home School Agreement
- 32 Learner and Parent Agreement

Dear Parents/ Carers,

As lead learners of Connah's Quay high school, we are delighted to welcome you to the school. Part of our role is to ensure that your child has nothing to worry about when entering secondary school education. We also aim to help other learners have a voice in school; to endeavour to help every learner feels included in our school community and to achieve their own version of success.

Connah's Quay high school effectively equips learners for their future endeavours, ensuring they depart with exceptional academic achievements having reached their potential. It is a community based school that aims to care for each and every learner in order to provide everyone with the best possible education, regardless of their background or academic abilities. Making sure that new learners in our school community feel safe and happy is vital in order for them to get the most out of their education. By letting our learners aspire to be whatever they want, we can ensure we can do our best to help them choose the right options for the career paths ahead.

Transitioning to a larger school environment can be a significant adjustment for learners, but we have a friendly teaching staff who are dedicated to ensuring that our learners feel confident in their ability to improve and expand on skills learned in primary school. Our teachers deliver lessons that help to develop a range of skills that are vital for young people when moving into their futures. Our school offers a wide selection of subjects for learners to partake in, meaning that everyone will take part in lessons that are of interest to them. Our curriculum offers 32 different subjects, from

core subjects such as maths, English and science, to academic subjects such as history and geography, to vocational subjects such as engineering, construction and hair and beauty.

Our school offers valuable assistance to learners requiring additional support in whichever way that is required whether it is developing English language skills; receiving extra support in Maths of accessing time with a key worker. Learners have positively reported on the benefits of our transition programme and the non-teaching Pastoral Co-ordinators ensure each learner and their family have access to any support that is needed.

We understand that making the decision of which high school will be most beneficial for your child is not an easy one, however, we sincerely hope that once you see just how much we value your child's happiness and education, you will be content with the knowledge that Connah's Quay high school will provide a sound education and a safe environment.

We look forward to working with you and your child.

Yours sincerely,
Lead learners



Welcome

Headteacher

It is with great pride that I welcome you to Connah's Quay High School.

It is a privilege to lead this school, which is right at the heart of this great community. We set the highest expectations of and for our learners and we leave no stone unturned in our pursuit of excellence in all areas of our work. We are committed to continuous school improvement and place great importance in working together in partnership with parents so that each learner receives the best possible educational experience.

Connah's Quay High School is an 11-16 English Medium school, proud of its setting in Wales serving the communities of Deeside and surrounding areas. We aim to provide a caring community, which encourages every child to achieve their full potential and develop their social confidence and wellbeing. We seek to achieve this by ensuring each child in our care:

- Reaches their full potential academically, morally and socially.
- Develops a broad set of skills that enables them to be successful in our ever-changing world.
- Leaves school as a confident young adult with a wealth of experience and knowledge behind them and a bright future ahead.

These aims are delivered through a commitment to providing the highest quality learning experiences, a strong pastoral system and an extensive range of sporting, cultural, physical and extracurricular activities and are encompassed by our school motto of 'Creating Success'.

Teaching and learning is at the very heart of what we do. We believe that learners will be engaged and make excellent progress if lessons are exciting, challenging, rewarding and enjoyable.



Learners are treated as individuals and our staff work hard to ensure that every child reaches their potential, whatever their ability. Our lessons develop a range of skills that are vital for young people entering the world of work in the 21st century. We expect learners to think, discuss ideas, to develop their understanding and ability to express their thoughts and opinions. We encourage them to ask questions, challenge their preconceptions and grow as independent lifelong learners.

Educating children is a great responsibility and an immense privilege. If you are a parent of a learner already at the school, thank you for entrusting us with that job.

Choosing the best school for your child is an extremely important decision. You have to be sure that, in addition to a sound education, your son or daughter will be cared for in a happy and safe environment.

On our website, we offer you an insight into just some of the opportunities available to your child at Connah's Quay High School. The move from primary to secondary can be difficult and is a vital time in a child's life. We work hard, in partnership with local primary schools, to make that transition as smooth and as successful as possible. The pastoral provision at the school is outstanding and ensures every child is treated as an individual and according to their own needs.

We are delighted to welcome visitors into our school so they can see for themselves the great work taking place here. A website can only give a flavour of our school so please do not hesitate to contact heads.pa@connahsquayhs.org.uk if you would like to visit the school. I look forward to working with you to secure the very best provision for your child.

James Forber BSc (Hons) NPOH

Chair of Governors

I want to take this opportunity to welcome you to our school prospectus, September 2024.

I am so very proud to be the Chair of the Governing Body at Connah's Quay High School.

I represent the Governing Body who are all committed to providing the best education and experience for your child during the next important and formative years of their education.

The Governing Body's primary purpose is to support the whole school community to ensure the best possible outcomes for all Learners at the school.

The Governing Body are all volunteers and have a key interest in the school, including parents and carers, staff, local community members and the Local Education Authority (LEA).

We all commit our time to attend statutory meetings and other occasions when required during the academic year.

The Governing Body act as a 'critical friend' to the school. They are able to challenge where necessary, in terms of how the school operates and the standards it achieves. This means that the Governor role is strategic rather than operational. Governors do not get involved in the day-to-day running of a school, instead supporting and challenging the school's leadership team to drive school improvement.



There are three core functions:

- Planning the strategic direction of the school, ensuring clarity of vision and school ethos
- Holding the Headteacher or school leadership team to account for the educational performance of the school and its pupils.
- Overseeing financial performance of the school and ensuring money is well spent (governorsforschools.org.uk)

We aim to achieve the best possible outcomes for your children via a robust, supportive and communicative partnership between parents and carers, the Headteacher and school team, Governors and, of course, the Learners themselves.

The whole school community are committed and dedicated to giving of their best for all of our Learners. Please take your time to read our prospectus.

We look forward to welcoming you to our school community.

Janet Roberts BA (Hons)

Enriching

Choosing the best school for your child is an extremely important decision. You have to be sure that, in addition to a sound education, your son or daughter will be cared for in a happy and safe environment.

The move from primary to secondary can be difficult and is a vital time in a child's life. We work hard, in partnership with local primary schools, to make that transition as smooth and as successful as possible.

The pastoral provision at the school is outstanding and ensures every child is treated as an individual and according to their own needs. Everything that we do is driven by our commitment to provide our learners with the highest standards of teaching and learning, so that they are able to achieve their full academic potential. In return, we have high expectations of learner behaviour and their commitment to their learning.

Connah's Quay High School staff lead by example and nurture an environment of trust, respect, optimism and honesty for all within our organisation, in partnership with learners, parents and carers. We are very proud of the young people in our care and their academic and personal successes.

Connah's Quay High School provides a friendly, caring, creative and purposeful learning environment to create success together. We are delighted to welcome visitors into our school so they can see for themselves the great work taking place here. A website can only give a flavour of our school so please do not hesitate to contact us if you would like to visit the school.



Enrichment Activities

At Connah's Quay High School we take great pride in the range of enrichment opportunities offered to our learners, both within the school day, and outside of the school day. Please see below for some of the opportunities on offer:

- Enrichment opportunities such as historical visits to see the battlefields, ski trips, and opportunities to perform at Disneyland Paris, are just a few on offer.
- Participating in events led by each AOLE such as International Day of Languages, Sports Day and NSPCC Number Day.
- Rewards days with experiences such as a visit to Chester Zoo.
- STEM enrichment days.
- Army Careers Events.
- Daily Acts of Collective Workshop whereby learners reflect on 'thoughts of the week'.
- Drop down mornings which deliver key elements of our PSHE and RSE curriculum.
- Extra Curricular clubs held at lunchtime and after school including sporting activities; clubs run by practical subjects such as art, dance and drama; languages clubs and clubs which offer opportunities outside of the classroom curriculum such as chess, crafts, and debate club.
- Contributions to the school and wider community through developing leadership skills and acting as role models to younger learners. An example of this would be supporting year 5 and 6 transition events.
- Learners gaining curriculum enrichment through the delivery of citizenship skills at KS4.
- Duke of Edinburgh expeditions.

We look forward to working with you to secure the very best provision for your child.

Experiences

Outstanding Teaching and Learning is our Mission

Teaching and learning is at the very heart of what we do.

We believe that learners will be engaged and make excellent progress if lessons are exciting, challenging, rewarding and enjoyable.

Our aim is to deliver high-quality teaching and learning, providing a high level of challenge for all to ensure that learners have the opportunity to develop their skills, knowledge and understanding.

Teachers use a range of strategies to ensure classrooms are stimulating and engaging places, exposing learners to cross-curricular links as well as real-life contexts to provide an authentic learning experience.

We strive to nurture independent learners who are able to use teachers' modelling to create their own success. Our teaching staff provide formative assessment and a range of feedback, including verbal and written, to ensure our learners are aware of how they are doing and what they need to improve.

The Six Areas of Learning and Experience

Our curriculum has been arranged into Six Areas of Learning, which follow through from age 3-16 to allow schools to have continuity and aid progression.

Each AOLE (Area of Learning and Experience) is working to develop strong cross-curricular links.

Maths & Numeracy
Maths

Health and Wellbeing
Food Technology, P.S.E., P.E.

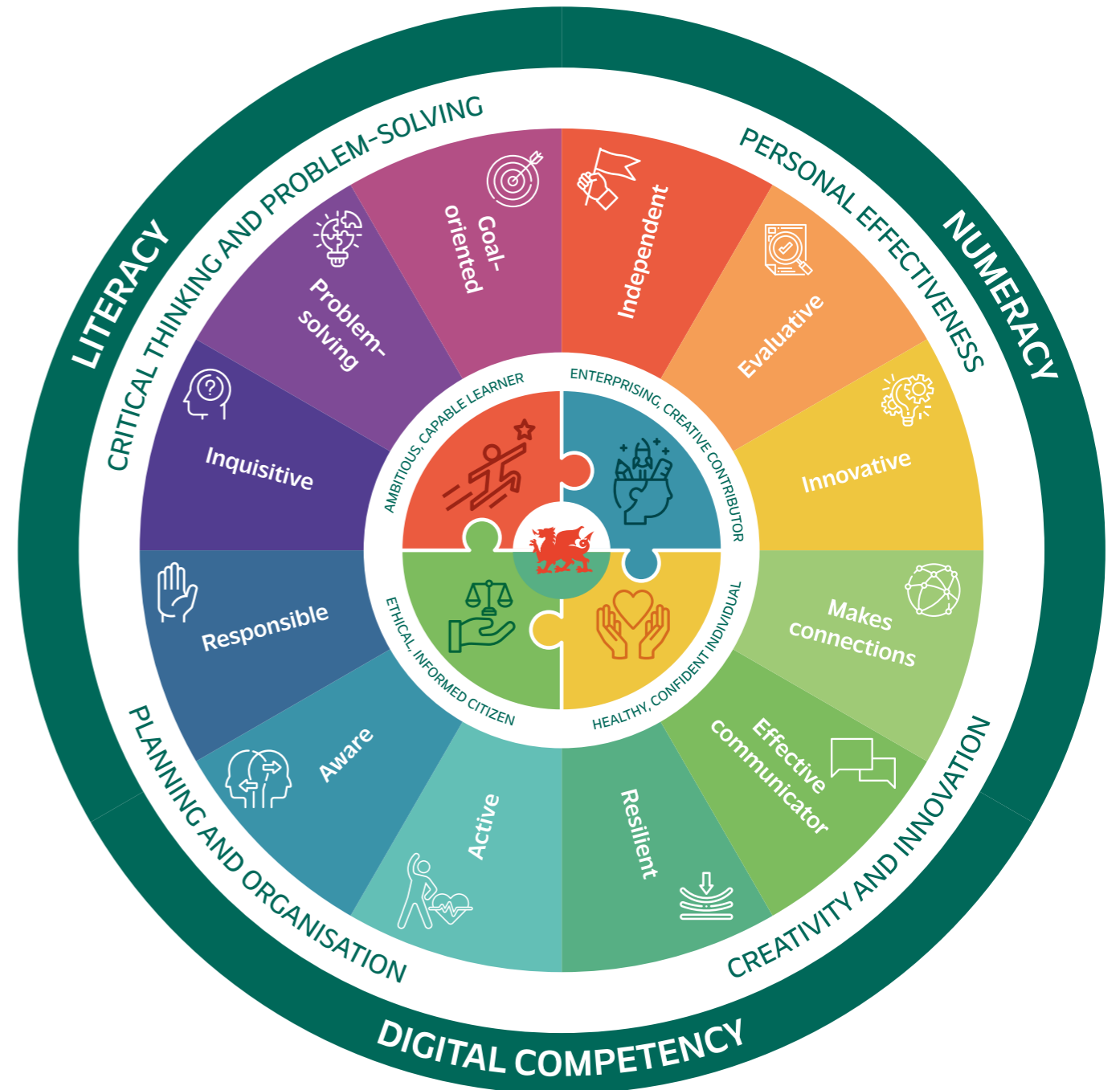
Language, Literacy & Communication
English, Welsh, MFL

Expressive Arts
Art, Drama, Music

Science & Technology
Science, DT, ICT

Humanities
RE, History, Geography

At the heart of our approach there are also the three key cross-curricular links of Literacy, Numeracy and Digital Competence, which feature in our new schemes of learning.



The Four Purposes

The school's vision has developed in line with the implementation of the new curriculum for Wales. The Four Purposes are at the core of this.

All curriculum areas have created new schemes of learning implemented in September 2023, designed so that all learners leave Connah's Quay High School with high aspirations and able to continue to the next steps of their education.

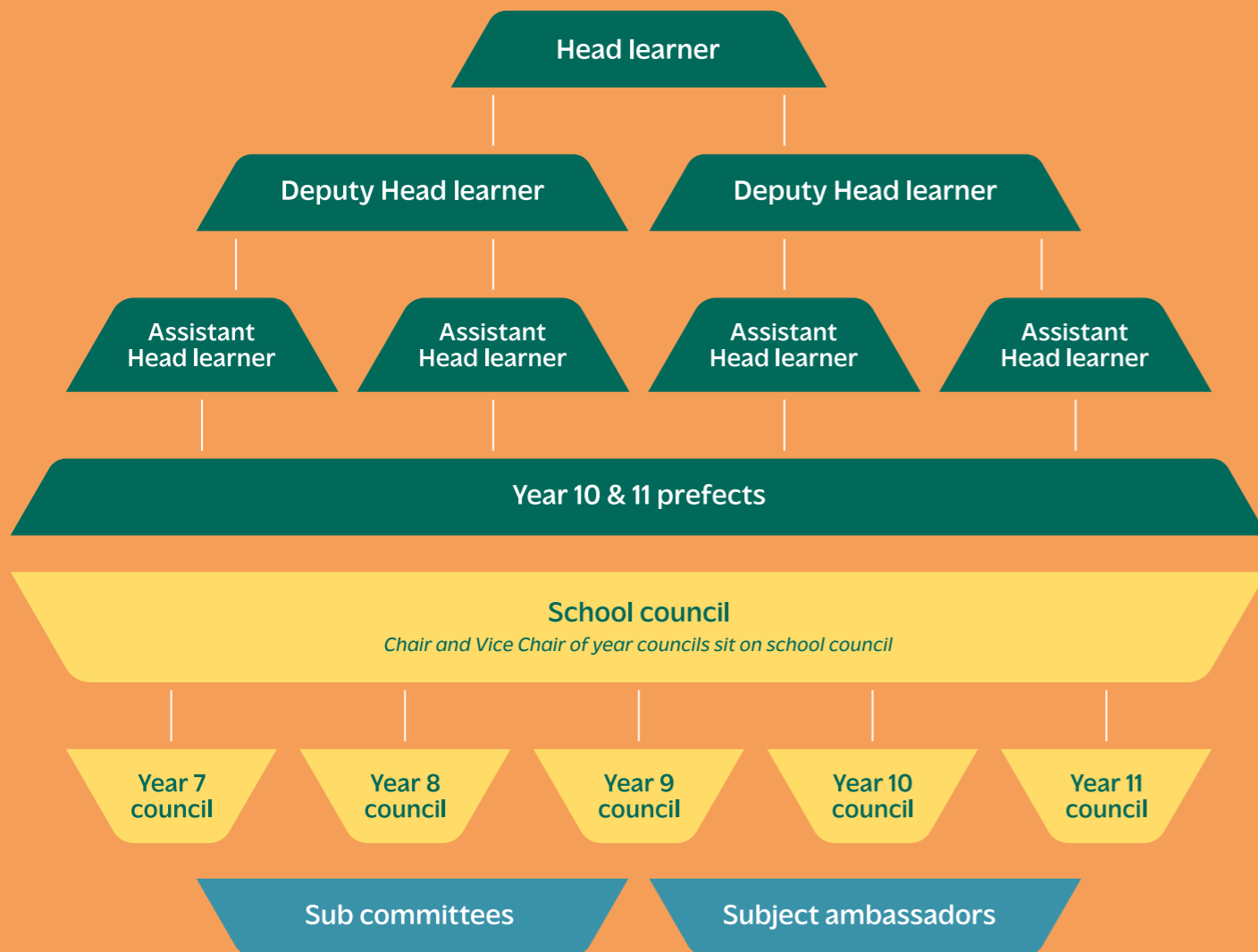
Future Leaders

Building

At Connah's Quay High school we firmly believe in providing opportunities for learners to develop leadership skills which impact positively on learning, teaching and well-being for both learners and staff. We genuinely want our learners to feel that they have a voice which has been heard. We also want to empower them and ensure that they are well prepared for their next steps, including Higher Education, to aim to achieve both professional and personal excellence in life after formal education.

The rationale for developing learner leadership is found in Article 12 of the United Nations Convention on the Rights of the Child which sets out the right of children to express an opinion and to be included in decisions that involve and affect them.

There are a number of ways in which learners can contribute to the leadership of the school:



Admissions

The school takes up to 240 learners in to year 7 each year. If you know you want your child to attend CQHS, we urge you to ensure your application is made before the deadline published by Flintshire County Council.

Connah's Quay High School admissions arrangements are administered by the Local Education Authority. Full details of these arrangements are outlined in the Flintshire website:

<https://www.flintshire.gov.uk/en/Resident/Schools/School-Admissions.aspx>

In the summer term, prior to transfer, steps are taken to ease the transition from primary to high school. Connah's Quay High School staff visit primary schools throughout the summer term to meet with Year 6 learners.

Year 6 learners are then invited to attend 3 days at the high school which enables them to familiarise

themselves with the school building; the staff and the other learners who will be in their form and year group. Learners requiring a more enhanced transition will also be invited to attend the Cam Ymlaen week.

Where parents wish their child to be admitted at times other than at the beginning of year 7, they are asked to contact Flintshire County Council (School Admissions) to make an application. Arrangements will then be made for parents to meet the Deputy Headteacher.

All new learners are invited to visit the school and undergo an induction process prior to starting.



Pastoral Care

At Connah's Quay, we are very lucky to have non-teaching pastoral co-ordinators who each have a responsibility for a year group.

This ensures we are able to provide a nurturing environment where concerns are addressed promptly and effective communication is assured.

We have a well-established transition programme for learners moving up from primary schools in addition to the work of the year 7 pastoral co-ordinator who spends a significant amount of time of the summer term working across the primary schools.

Each learner, on arrival at the school, is allocated a tutor group which comprises a mix of learners from different primary schools, although friendship pairings are taken into account when creating the group.

"The school provides beneficial support for pupils with English as an additional language. A designated team provide individual and group sessions for these pupils to develop their language skills. This has a positive impact on their ability to access the curriculum and communicate confidently with their peers."

– Estyn (2023)

"Staff foster a nurturing, inclusive environment. They have developed a suitably wide range of provision – supported appropriately by external partners such as the police and health agencies – to support pupils with their personal, social, and emotional wellbeing. Pupils value the support that is offered to them."

– Estyn (2023)

Additional Needs

It is our aim to provide all learners with a high level of education provision ensuring specific needs are identified and addressed.

The school is adapted for learners with mobility disabilities with high quality facilities being a feature of our building.

Learners with additional learning needs are supported in ways that are individual to them. For some, this may mean support within a mainstream classroom, for others a higher level of small group support is required. Each learner's needs are considered regardless of whether an Individual Development plan has been issued.

The well-established team is led by an Assistant Headteacher and Assistant ALNCOs, who work closely with the primary schools to ensure a smooth transition to high school.

Welsh & Proud – Cymreig ac yn Falch

At Connah's Quay High School, we take immense pride in our Welsh heritage while providing a comprehensive English medium education. Here in Flintshire, close to the Welsh-English border, our school is uniquely positioned to offer the best of both worlds: a high-quality education delivered in English, enriched by the vibrant culture and traditions of Wales.

Alongside Cymraeg as a core curriculum subject, Connah's Quay High school offers opportunities to celebrate our national heritage through the annual school Eisteddfod and residential visits to the capital city Cardiff. Learners at KS3 and KS4 are given opportunities to compete in national sporting events organised through the Urdd (the national voluntary youth organisation in Wales). Through various cultural events and Welsh language, we foster a sense of belonging and pride in being Welsh.

At Connah's Quay High School, we are proud to be Welsh and equally proud to prepare our learners for success in a globalized world. Join us as we continue to build a school community that is not only academically outstanding, but also rich in Welsh pride.



Curriculum

Key Stage 3

Years 7 and 8 are now following Curriculum for Wales.

We have been working hard to develop a curriculum that allows our learners to be ambitious and creative, to make ethical and healthy decisions and to be effective citizens of Wales. Our curriculum is still taught in disciplinary subjects (see below) and this allows for a broad and balanced provision which includes cross-curricular skills of Literacy, Numeracy and Digital Competence.

In Year 9 all learners follow a broad and balanced range of subjects, which comply with the National Curriculum. Our main aim is to develop the knowledge and skills for Key Stage 4 and beyond.

Subjects taught to all learners are:

- English
- Mathematics
- Science
- Welsh
- International Languages
- Religious Studies
- Geography
- History
- Music
- Design and Technology
- Expressive Arts
- Physical Education
- Drama
- Dance
- Information Technology
- Health and Wellbeing

Learners are mainly taught in sets in core subjects at KS3 in Years 8 and 9, and mixed ability groups in Year 7.

In Year 9 learners and parents receive a Key Stage 4 "Pathways" Booklet, which contains full details of Year 10 and 11 courses. We believe in providing as much information, help and guidance as possible, including a Pathways Evening and taster sessions to ensure that learners make well-informed choices and achieve their maximum potential.

Mandatory elements of Religion, Values and Ethics (RVE) and Relationship and Sexuality Education (RSE) are taught age-appropriately across the curriculum.

Key Stage 4: Years 10 and 11

In Key Stage 4 learners embark on two-year courses leading to external accreditation. These include academic and vocational learning opportunities leading to nationally recognised qualifications.

All learners study the following which will be organised into ability sets:

- English Language & Literature
- Mathematics and Numeracy
- Double Award Science or Triple Sciences
- Welsh
- Physical Education Core
- Skills Challenge Certificate
- Financial Literacy

In addition, learners then choose a further three subjects.

Current choices are:

- Art, Craft & Design
- Prince's Trust
- Digital Technology
- Business Studies
- Computer Science
- Construction
- Engineering
- Food & Nutrition
- Health & Social Care
- French
- Geography
- History
- Music
- PE
- Drama
- Photography
- Religious Studies
- Textiles
- Media
- Hair and Beauty



Sporting Aims & Provision

Aims

In PE we aim to give learners the physical skills, knowledge and understanding to enable them to participate in healthy, life-long activity.

Curriculum

At KS3 the learners are given the opportunity to participate in a range of competitive and non-competitive activities that enable the development of physical skills, core skills and wider skills that are essential for participation in the 'wider world'.

The learners have four hours of PE across a two-week timetable. Each activity lasts approximately 6-7 hours. Learners are assessed both formatively during lessons and at the end of each activity.

At KS4, where possible, learners follow their own choice of pathway in a range of competitive and non-competitive activities, to nurture a positive attitude towards lifelong participation and health.

Learners have three hours of PE across a two-week timetable.

Extra-curricular activities

There are many opportunities for learners to extend their skills and experience through the extra-curricular programme. Again, there are competitive and non-competitive opportunities.

Competitive/team opportunities:

Football, netball, badminton, rounders, athletics, cross-country, Sports day.

Non-competitive (leisure) opportunities:

Badminton, table tennis, netball, dodge ball, gymnastics, volleyball, football, tennis (mini) and rugby.

We work closely with the 5x60 programme to enhance learning opportunities before school, at lunchtime and after school.

Activities that learners may participate in during curriculum time:

- Football
- Rugby
- Badminton
- Health & fitness
- Dodge ball
- Rounders
- Cricket
- Sport education
- Netball
- Gymnastics
- Problem solving
- Volleyball
- Athletics
- Softball
- Table-tennis
- Bouldering

Facilities

We have an extensive range of sports facilities at Connah's Quay High School. These include:

A four-court sports hall, a gymnastics/multi-purpose gym, a multi-purpose activity room, a bouldering room, outdoor netball courts, a 3G all-purpose pitch, grassed sports fields with three football pitches, one rugby pitch and use for summer activities.

We also have close links with Coleg Cambria and therefore we use the Deeside athletics stadium and indoor athletics centre for our athletics in the summer.

Staff

We have six fully qualified, full time members of the PE department under the wider curriculum area of Health & Wellbeing.



Religious Education and Collective Worship

Learners attend regular year group assemblies and complete the Daily Act of Worship (D.A.C.W.) as part of the timetabled Academic Review.



Relationship and Sexuality Education

The following general topics of the Relationships and Sexuality Code 2021 are taught within Health and Wellbeing, Science, Humanities and the allocated Drop Down mornings:

- Relationships and identity
- Sexual health and well-being
- Empowerment; safety and respect

Connah's Quay High School partners with outside agencies to support the delivery of key topics.

These topics allow us to design and develop a curriculum, which is developmentally appropriate for the learners and ensure the content in RSE is inclusive and reflects diversity .

Careers at CQHS

Connah's Quay High School offers a comprehensive support system for our learners, aligning with our vision for them to aspire, take responsibility, and care. This vision is facilitated through close collaborations with Careers Wales; local and national employers; post-16 educational institutions, and our alumni network. Our aim is to develop ambitious, capable learners who possess strong personal effectiveness skills. We strive to help them identify their next steps in learning and achieve their long-term career goals.

We believe that career education is integral to helping learners aspire, take responsibility, and care. By collaborating with Careers Wales, we provide our learners with expert career guidance and resources that inspire them to set ambitious goals and pursue their dreams. Engaging with local and national employers offers learners real-world insights and opportunities, helping them understand the importance of responsibility in a professional context and the skills required to succeed.

Our educational support begins with year 7 whereby subject areas ensure that opportunities to link future careers with the learning in the classroom are available in schemes of learning. Career support continues in year 9 during the options process, where learners select subjects that align with their interests and career aspirations. In years 10 and 11, a broad and balanced curriculum prepares learners for their chosen paths, as

well as additional events such as assemblies providing information on future careers and next steps; one to one careers interviews for all learners; workshops to support learners in CV writing and preparing for interview, and mock interview days with a range of local employers. Additionally, on results day, we aid year 11 learners who have not secured their next steps, ensuring they receive the necessary guidance to move forward.

Our partnerships with post-16 educational establishments, such as Coleg Cambria and Caban Universities, also ensure that learners are well-prepared for the next steps in their educational journey, fostering a sense of responsibility for their own learning and future. Alumni of CQHS share their experiences and advice, serving as role models and demonstrating how caring about one's career and community, can lead to personal and professional fulfilment. Local and national employers provide real-world insights and opportunities, and we have made a number of strong partnerships with cutting edge technological companies such as Airbus and Raytheon, to fuel interest in careers in STEM industries.

Through these initiatives, Connah's Quay High School ensures that all learners are well-prepared to meet their future educational and career goals, fostering a community of responsible, caring, and aspirational individuals.



The School Day / Term Dates

Timetable

8:00	Open for Breakfast club
8:40	All learners to be on site
8:50-9:50	Lesson 1
9:50-10:50	Lesson 2
10:50-11:10	Break
11:10-12:10	Lesson 3
12:10-13:10	Lesson 4
13:10-13:40	Lunch
13:40-14:00	Academic review
14:00-15:00	Lesson 5

Term Dates

Autumn Term

4 September 2024 - 20 December 2024

Half Term

28 October 2024 - 1 November 2024

Spring Term

6 January 2025 - 11 April 2025

Half Term

24 February 2025 - 28 February 2025

Summer Term

28 April 2025 - 21 July 2025

Half Term

26 May 2025 - 30 May 2025

Inset Dates

- 2 September 2024
- 3 September 2024
- 6 December 2024
- 6 January 2025
- 21 February 2025
- 21 July 2025

School Meals

A range of food is available each day which includes main meals and snacks.

We have a fully equipped dining hall and an outside eating hut.

All items are individually priced and there is also often a set meal each day. Learners are also welcome to bring a packed lunch.

We operate a cashless system at school called Parent Pay. Parents and carers will be sent information about this online payment system in order to enrol securely. School menus and prices will also be published on this platform.

Families who are entitled to free school meals will need to apply online on the Flintshire County Council website:

<https://www.flintshire.gov.uk/en/Resident/Schools/Education-Benefits.aspx>

School Uniform

The governing body sets high standards for our uniform and our ethos is that learners need to present themselves in a 'business-like' way that will reflect the expectation of professional workplaces.

Uniform Requirements

- White shirt and school tie
- Connah's Quay High School blazer with school logo
- Connah's Quay High School v-neck sweater (optional)
- Connah's Quay High School grey trousers
- Connah's Quay High School grey skirt
- Plain dark socks or tights without adornments
- Plain black shoes (NOT trainers, pumps or boots)

Extreme hairstyles and/or colours are not permitted.

False nails are not permitted.

Any make-up worn must not be obvious and false eyelashes are not allowed. Facial and body jewellery is not acceptable.

The only jewellery allowed in school is a wristwatch and one pair of stud earrings.

Outdoor clothing is expected to reflect the school uniform (no large logos) and may not be worn around school.

Shoes that are NOT acceptable

Shoes are deemed to be unacceptable if they are not plain black in colour, are made of canvas, overly decorative or have white soles.



School Uniform – Physical Education

Girls and Boys PE Kit

Boys (Compulsory)

- Connah's Quay High School black shorts
- Connah's Quay High School black and green t-shirt or polo shirt
- Black football socks
- Trainers
- Football boots

Boys (Optional)

- Connah's Quay High School ¼ zip black and green top

Safety

- Shin pads for hockey/football.
- Gum shield/mouth guard (is not compulsory but is highly recommended)
- Football boots with metal studs or blades are NOT permitted.

Girls (Compulsory)

- Connah's Quay High School black shorts
- Connah's Quay High School black and green t-shirt or polo shirt
- Trainers

Girls (Optional)

- Connah's Quay High School skort
- Connah's Quay High School leggings
- Connah's Quay High School ¼ zip black and green top

School Uniform Suppliers

All uniform items are available from:

Queensferry Sports

18 Station Rd, Queensferry, Deeside CH5 1SX
01244 812040

Monkhouse Schoolwear

14 – 16 New St, Mold CH7 1NZ
01352 756636



Home School Agreement

We understand that Connah's Quay High School (on behalf of Flintshire Education Authority, Headteacher and Governors) has a legal responsibility to educate your child and that we have a professional responsibility to ensure that this happens effectively.

The school's vision is focused on your child achieving success regardless of background or ability and this success is linked to wellbeing as well as the standard of work.

As a school, to the best of our ability, we will:

- Values by providing a safe, well-ordered, and caring environment in which all children can learn.
- Be committed to the school's behaviour policy which focuses on being Ready, Respectful and Safe.
- Ensure that all learners can achieve their potential by offering a broad and balanced curriculum. We will meet the individual needs of each child within a supportive ethos.
- Keep parents informed about activities and communicate with you regularly about your child. We will consider your views about areas of school life to ensure we are providing the best education that we can.
- Send home an annual report on your child.
- Take the responsibility of setting, marking and monitoring homework in accordance with the school policy.
- Arrange regular consultation meetings to discuss your child's progress.
- Make children aware of our expectations of them.
- Work in effective partnership with the family.
- Inform parents about any behaviour or progress concerns and agree on interventions to ensure these are addressed effectively.

Safeguarding

All staff are made aware of the school's policy regarding child protection and undertake regular training in order to be able to uphold it. The designated Safeguarding lead in the school is Mrs D Millington, Deputy Headteacher responsible for Inclusion.

The school's policies regarding safeguarding can be viewed on the school's website.

Connah's Quay High School works hard to provide a safe and healthy environment for all learners and staff. Health and Safety checks are made regularly, and measures taken to rectify any potential hazards. We ask and encourage learners, staff and parents to report any concerns regarding security or Health and Safety immediately to the Headteacher.



Learner & Parent Agreement

The Parent/Carer will:

- Ensure that my child attends school regularly, punctually and ready to learn.
- Endeavour to not take holiday in school term.
- Make sure that my child is wearing the correct school uniform with appropriate school shoes and is properly equipped for the school day.
- Contact the school by 9:00am if my child is ill.
- Inform the school about any concerns or problems that may affect my child's work or behaviour.
- Demonstrate interest and engagement in my child's school life and support them with homework and activities set by the school.
- Make all appointments to speak to school staff in advance (please contact the school's reception who will facilitate this).
- Help my child to learn that they are part of a community (both in and out of school) and that they represent the community even when they are not in school.
- Support the school's behaviour policies.

I will:

- Be ready to learn.
- Respect other people and their property.
- Behave in a way which keeps the school a safe place.
- Complete my classwork and homework to the best of my ability.
- Wear the correct school uniform with pride.
- Engage fully in school life.
- Follow reasonable instructions from adults in the school.



Connah's Quay High School

Golftyn Lane,
Connah's Quay Deeside
Flintshire
CH5 4BH

cqmail@connahsquayhs.org.uk

Telephone: 01244 813491

Ysgol Uwchradd Cei Connah

Lon Golftyn,
Cei Connah Glannau Dyfrdwy
Sir Y Fflint
CH5 4BH

cqmail@connahsquayhs.org.uk

Ffon: 01244 813491

www.cqhs.org.uk

[@ConnahsQuayHigh](#)

